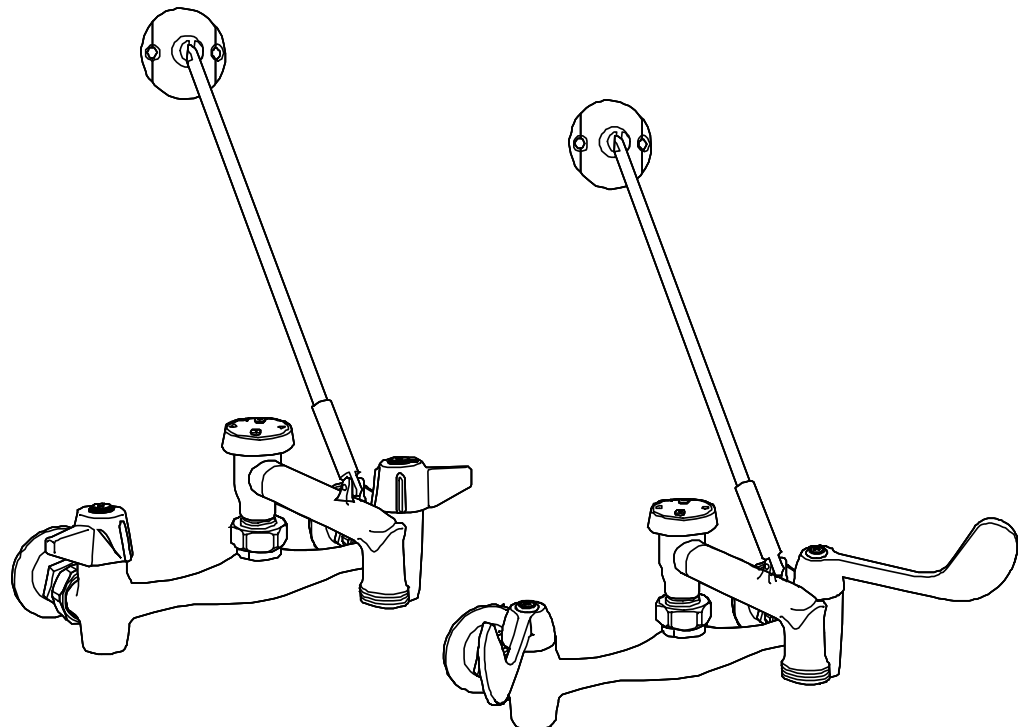


Central Brass®

The Easy Choice

Service Sink Faucet

Rigid Pail Hook Spout
Compression Stem Assemblies
Replaceable Seats



0054 Series

Service Sink Faucet with Wall Brace
and Vacuum Breaker

CENTRAL BRASS MFG CO

2950 East 55th Street, Cleveland, Ohio 44127

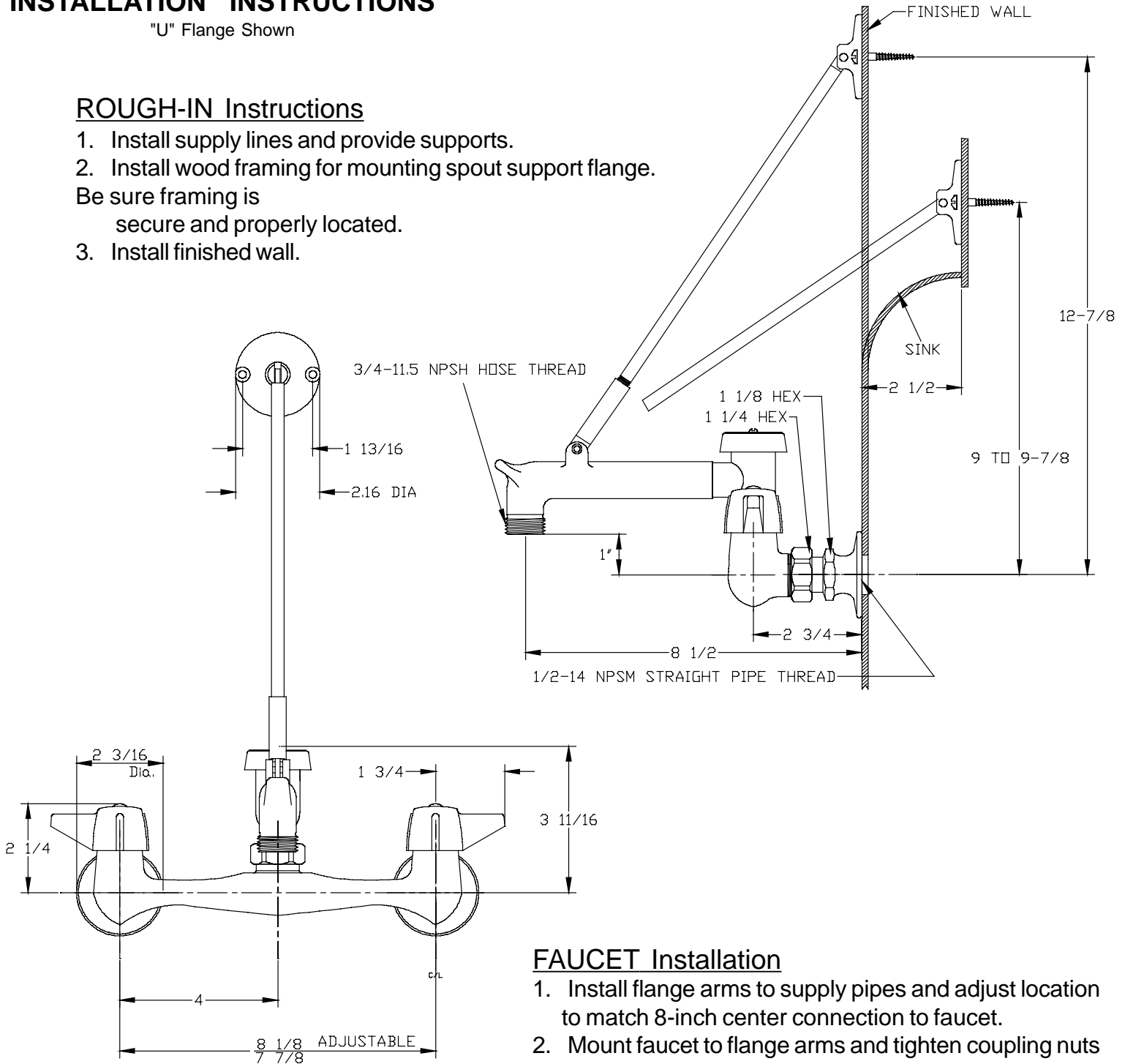
Phone: 216-883-0220 Fax: 216-883-0875 Email: sales @CentralBrass.com

CENTRAL BRASS INSTALLATION INSTRUCTIONS

"U" Flange Shown

ROUGH-IN Instructions

1. Install supply lines and provide supports.
2. Install wood framing for mounting spout support flange.
Be sure framing is
secure and properly located.
3. Install finished wall.



FAUCET Installation

1. Install flange arms to supply pipes and adjust location to match 8-inch center connection to faucet.
2. Mount faucet to flange arms and tighten coupling nuts and flanges.
3. Attach support rod to spout use adjustment to assure spout is properly supported. Install support wall bracket with screws provided.
4. **(For items with Intergal stops)** Adjust intergal stop to meter maximum flow.

CENTRAL BRASS MFG CO

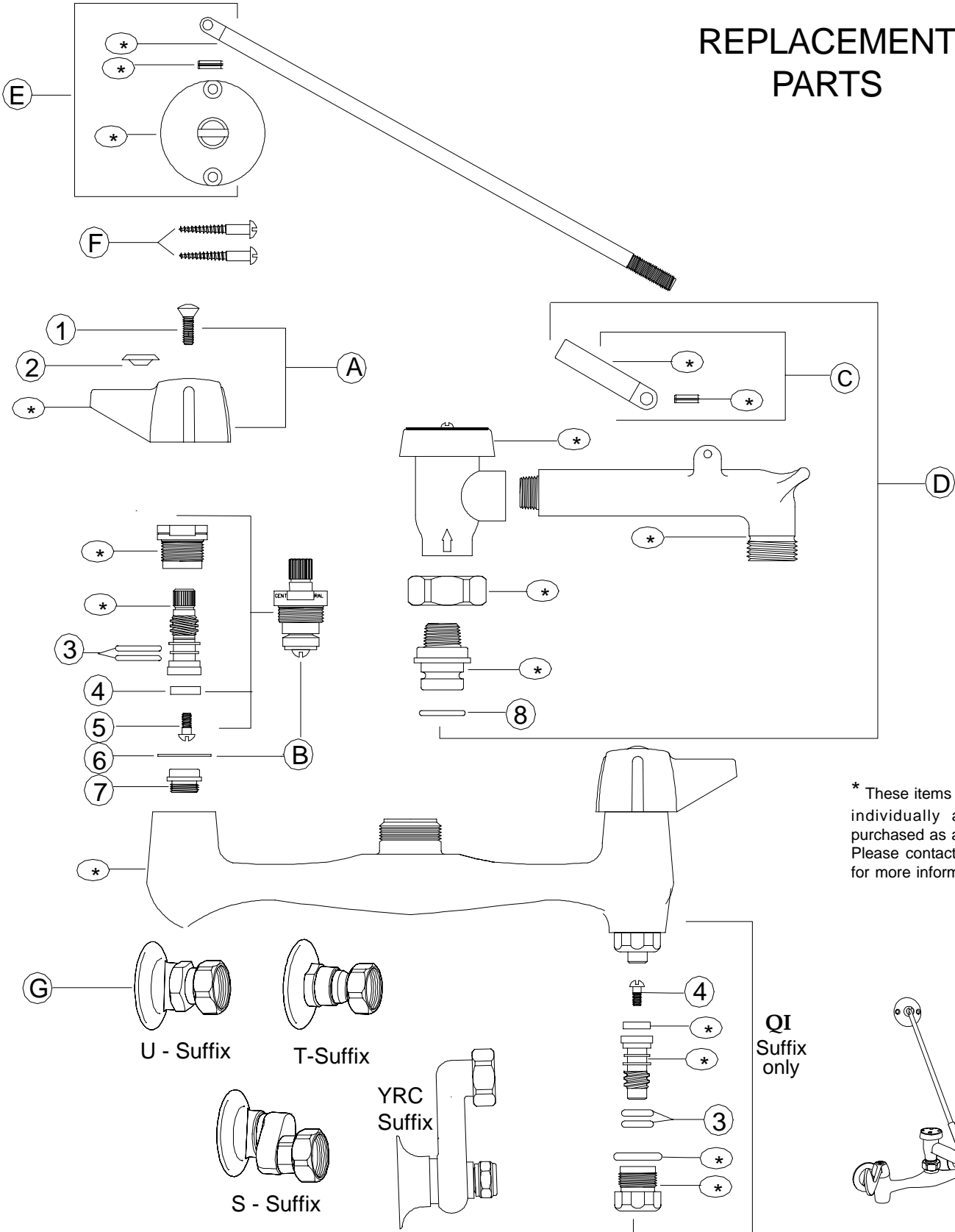
2950 East 55th Street, Cleveland, Ohio 44127

Phone: 216-883-0220

Fax: 216-883-0875

Email: sales @CentralBrass.com

REPLACEMENT PARTS



* These items are not offered individually and must be purchased as a group or unit. Please contact Central Brass for more information.

QI Suffix only

NOTE: Items shipped in the summer of 2001 may use our *NEWO*-Ring stem unit (K-453). This stem is interchangeable with the G-353 stem unit.

CENTRAL BRASS MFG CO

2950 East 55th Street, Cleveland, Ohio 44127

Phone: 216-883-0220 Fax: 216-883-0875 Email: sales @CentralBrass.com

REPLACEMENT PARTS

#	Part #	Description
A	G-523-C	Lever Handle C Indexed with Screw (X107-F)
A	G-523-H	Lever Handle H Indexed with Screw (X107-F)
B	G-454-EL	Cold Quick-Pression Quarter-Turn O-Ring Stem Assembly with Gasket (X1028-Y)
B	G-454-ER	Hot Quick-Pression Quarter-Turn O-Ring Stem Assembly with Gasket (X1028-Y)
C	G-5355-S	Adjuster Rod & Pin group
D	U-1615-54-02	Rigid Spout with Hose End & Vacuum Breaker, includes Adjuster Rod & Pin (Polished Chrome Finish)
D	U-1615-54-04	Rigid Spout with Hose End & Vacuum Breaker, includes Adjuster Rod & Pin (Rough Chrome Finish)
E	SU-3130-M	Wall Bracket, Rod & Pin group
F	G-128-52	Wood Screws for wall bracket (2 pcs)
G	SU-2807	Female Flange Adjustable 7 ⁷ / ₈ to 8 ¹ / ₈ inch Centers (U suffix)
G	SU-2846	Male Flange Adjustable 7 ⁷ / ₈ to 8 ¹ / ₈ inch Centers (T suffix)
G	SU-2806	Female Flange Adjustable 6 to 9 ½ inch Centers (S suffix)
G	SU-2841-ARC	Female Flange Adjustable 3 to 13 Centers with Integral Stops (YRC suffix)
1	X107-F	Handle Screw (25 pcs per pack)
2	X107-FB	Blue Index Ring (5 pcs per pack)
2	X107-FR	Red Index Ring (5 pcs per pack)
3	X1038-453	O-Rings (25 pcs per pack)
4	X901-WNN	Stem Seat Washer (25 pcs per pack)
5	X104	Seat Washer Screw (25 pcs per pack)
6	X1028-Y	Gasket (25 pcs per pack)
7	X263-BC	Replacement Seat (10 pcs per pack)
8	X1038-KN	O-Ring for rigid spout (25 pcs per pack)

OPTIONS & REPLACEMENT PARTS for options

Suffix Number	Replaces Item #	Part Number	Description
EL	A	G-4149-C or H	6-Inch Brass Wrist Handles – Index Blue (X107-FB) or Index Red (X107-FR)
ELS	A	G-4147-C or H	4-Inch Brass Wrist Handles – Index Blue (X107-FB) or Index Red (X107-FR)
X	A	G-1143-C or H	Brass Canopy Handles – Blue Index (X107-FB) or Index Red (X107-FR)
		X107-FB or FR	Blue Index or Red Index (5 pcs per pack) Used for EL, ELS and X suffix's
M	7	X263-BM	Monel Replaceable Seat (2 pcs per pack)
M	5	X104-ML	Monel Screw (6 pcs per pack)

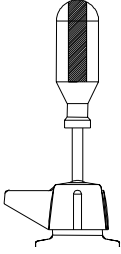
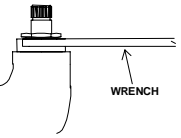
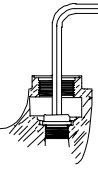
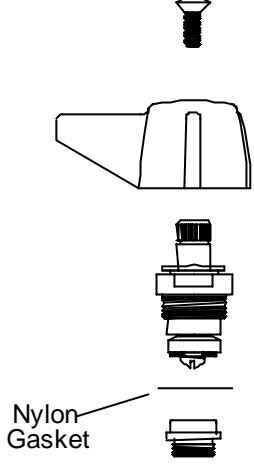
- If faucet has round handles (70 or 80 suffixes) , use two Hot stem assemblies
- If faucet has lever handles, use one Hot and one Cold stem assemblies

CENTRAL BRASS MFG CO

2950 East 55th Street, Cleveland, Ohio 44127

Phone: 216-883-0220 Fax: 216-883-0875 Email: sales @CentralBrass.com

CENTRAL BRASS MAINTENANCE INSTRUCTIONS

DISASSEMBLY	REPLACEMENT
<div style="border: 1px solid black; padding: 5px; margin-bottom: 10px;"> <div style="display: flex; align-items: center;"> <div style="border: 1px solid black; width: 30px; height: 30px; text-align: center; line-height: 30px; font-weight: bold; margin-right: 10px;">1</div> <div> <p>REMOVE HANDLE</p>  <ol style="list-style-type: none"> 1. Turn off water supply. 2. Remove screw. 3. Remove handle. </div> </div> </div> <div style="border: 1px solid black; padding: 5px; margin-bottom: 10px;"> <div style="display: flex; align-items: center;"> <div style="border: 1px solid black; width: 30px; height: 30px; text-align: center; line-height: 30px; font-weight: bold; margin-right: 10px;">2</div> <div> <p>REMOVE STEM ASSEMBLY</p>  <ol style="list-style-type: none"> 1. Use adjustable wrench. 2. Turn stem to open position 3. Unscrew counter-clockwise. Remove stem unit. </div> </div> </div> <div style="border: 1px solid black; padding: 5px;"> <div style="display: flex; align-items: center;"> <div style="border: 1px solid black; width: 30px; height: 30px; text-align: center; line-height: 30px; font-weight: bold; margin-right: 10px;">3</div> <div> <p>REMOVE SEAT</p>  <ol style="list-style-type: none"> 1. Insert 5/16" allen wrench in seat. 2. Turn seat counter-clockwise to remove. </div> </div> </div>	<div style="border: 1px solid black; padding: 5px; margin-bottom: 10px;"> <div style="display: flex; align-items: center;"> <div style="border: 1px solid black; width: 30px; height: 30px; text-align: center; line-height: 30px; font-weight: bold; margin-right: 10px;">4</div> <div> <p style="text-align: center;">Use Only Genuine Central Replacement Parts</p> <p>G-454-ER Hot stem assembly 1/4 turn with gasket G-454-EL Cold stem assembly 1/4 turn with gasket X263-BC Replaceable Seat (10 per Pack) X1028-Y Nylon Gasket (25 per Pack)</p>  <p style="margin-left: 20px;">Nylon Gasket</p> </div> </div> </div> <p style="text-align: center;">Replace Components In Reverse Order of Disassembly</p>

CENTRAL BRASS MFG CO
 2950 East 55th Street, Cleveland, Ohio 44127
 Phone: 216-883-0220 Fax: 216-883-0875 Email: sales @CentralBrass.com